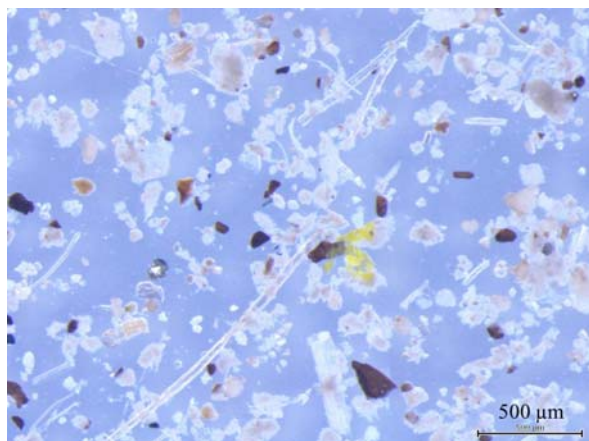
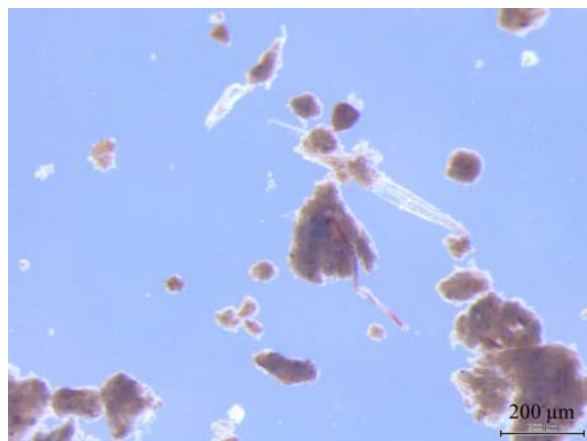


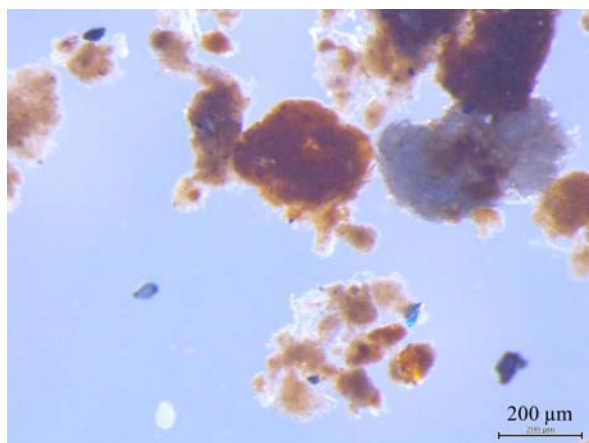
### 1.12.6 汚泥発酵肥料



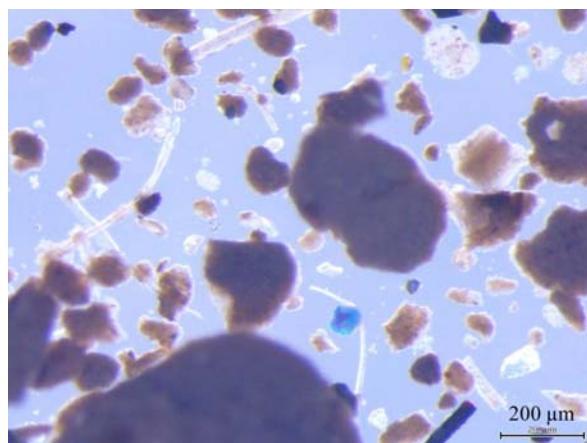
▲ 汚泥発酵肥料(1):原料の90%が下水汚泥肥料, 実体顕微鏡(アルカリ処理, 107倍)



▲ 汚泥発酵肥料(1), 実体顕微鏡(酸処理, 214倍)



▲ 汚泥発酵肥料(2):原料はし尿汚泥肥料100%, 実体顕微鏡(アルカリ処理, 214倍)



▲ 汚泥発酵肥料(2), 実体顕微鏡(酸処理, 214倍)